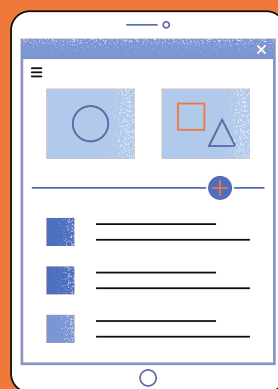


PATIENT SAFETY: REPORTING AN ADVERSE EVENT

WHAT TO REPORT

The Patient Safety Surveillance and Improvement Program (PSSIP) within the Utah Department of Health collects reporting from healthcare facilities on adverse events that may occur to a patient while receiving care.

Adverse events refer to any potential harm or death to a patient as a result of the care received from a healthcare facility rather than an underlying condition or disease of the patient.



To learn more, go to patientsafety.health.utah.gov



WHEN TO REPORT

Adverse event reports should be submitted to PSSIP within 72 hours of the occurrence of the adverse event.

HOW TO REPORT

Visit our website at <https://patientsafety.health.utah.gov/> to access to the RedCap reporting system for the PSSIP



To learn more, use the QR code to visit our website

WHO NEEDS TO REPORT



R429-1 : ADMINISTRATIVE RULE OF PATIENT SAFETY
Subsection 26-21-2(13) requires the following healthcare facilities as defined by to report adverse patient safety events to PSSIP:

- general acute hospitals
- specialty hospitals
- home health agencies
- hospices
- nursing care facilities
- birthing centers
- residential-assisted living facilities
- ambulatory surgical facilities
- small health care facilities
- abortion clinics
- end stage renal disease facilities

Patient Safety Surveillance and
Improvement Program

For questions:

Phone: (385) 332-1720

Email: patientsafety@utah.gov

Website: patientsafety.health.utah.gov

Center for Health Data and Informatics

Utah Department of Health

Salt Lake City UT 84114